

## **BOOT 'N BLISTER REUNION TRIP, SEPTEMBER 20-22, 2002**

### **SOUTH WARNER WILDERNESS OVERNIGHT BACKPACK**

I mentioned a possible hike to the Sierra for this year but Ron came up with this idea that seems much better. Let's do it! --Mike

From: Ron Barager ([awoodcutter@yahoo.com](mailto:awoodcutter@yahoo.com))

Another suggestion for next year's trip would be Patterson Lake here in the South Warner Wilderness. Here's a challenge for you: I contend that Patterson Lake at 9,000 ft is the highest elevation lake north of Lake Tahoe & south of Canada, west of the continental divide. I'm sure you'd be the one to confirm or shoot this down. Let's use the minimum requirement that a "lake" has to be at least an acre & be perennial. Patterson is a six-mile hike each way from the Pepperdine Trailhead at 6,800 feet or so, at the north end of the wilderness. It's a deep, glacier-formed lake and is considered the crown jewel of Modoc's high country. Pepperdine is 20 miles via county roads and gravel forest roads from Alturas. The campground at the trailhead has water, toilets, tables, campfire rings, and usually is almost empty so would make a great base camp. From many points along the trail you can see into Oregon, Nevada's great basin, Mt. Shasta, Lassen Peak and the Modoc Plateau. Janet and I first backpacked the South Warner Wilderness in 1970 so it certainly qualifies as "old B&B stomping grounds." Alturas is a 3 1/2 hour drive from Redding via 299, or a 3 1/2 hour drive from Reno via 395. The 7 1/2 minute topographic quad is Warren Peak. After Labor Day and before hunting season would be the best time. In 1998 it snowed a foot at the lake on September 29, so maybe mid September would be the best target date, or possibly "Tour of Yreka Time" (bicycle race) which was September 19-21 in 1975 [we'll do it September 20-22, 2002, mfd].

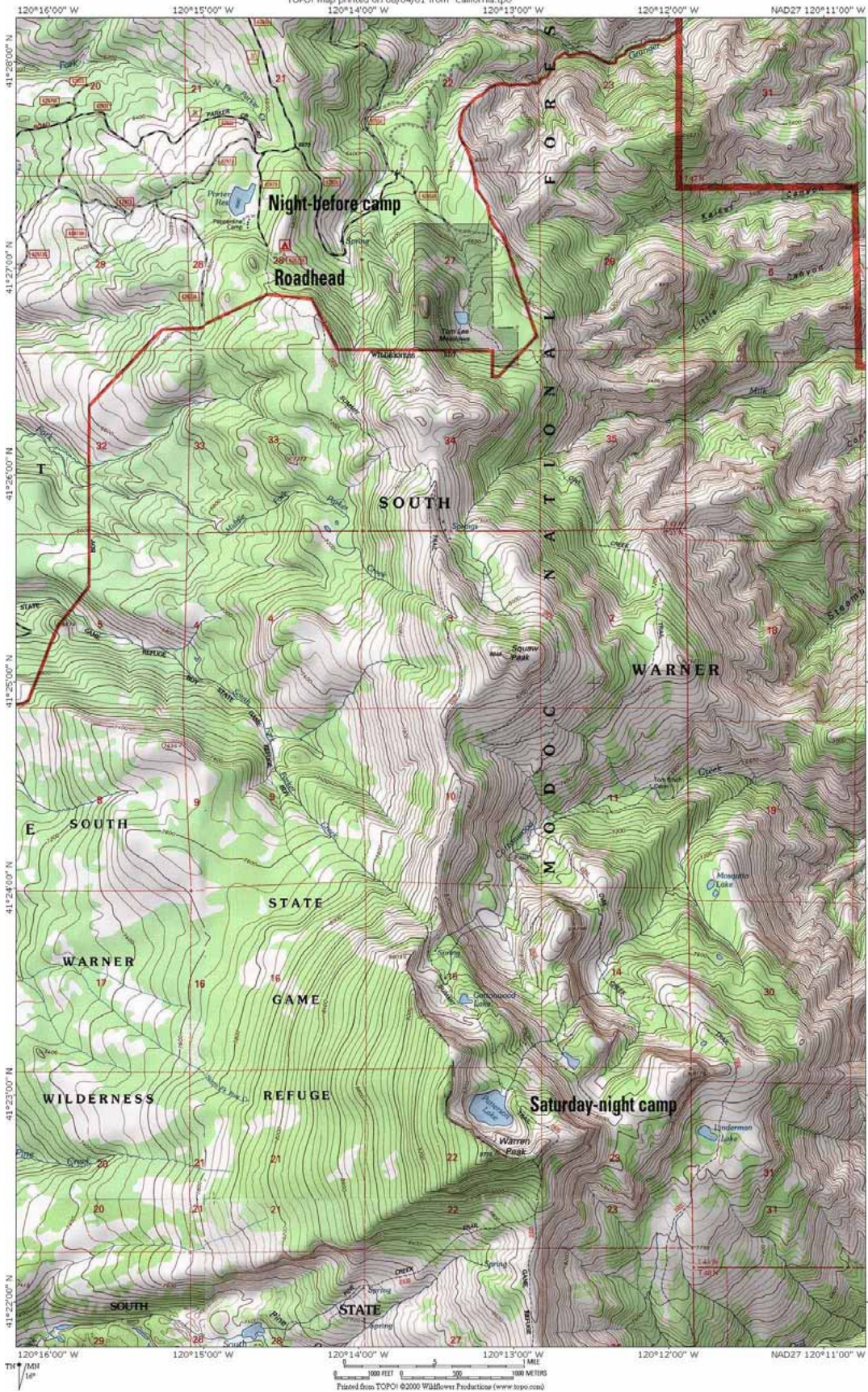
Then on 9/2/2002, Ron wrote: "I was at Patterson Lake this afternoon and it looks superb, plus the smoke from the Oregon fires is pretty much dissipated now, after hanging around here for 1 1/2 months.

"My work phone is 530-279-6116 (more for messages as I'm rarely in the office) Home(cell service only) is 530-279-1200, but I can't access my messages yet so just keep trying, evenings are best bet." --Ron

U.S. Geological Survey Topographic Map: Warren Peak, Calif. 1:24,000 (1993) covers it all. The lake's coordinates, for your GPS, are N41° 22' 56.3" W 120° 13' 11.6".

Mike Diggles, 1-800-223-8081, ext. 5404  
154 Rutherford Ave., Redwood City, CA 94061-3511, 650-369-6094  
Boot 'n Blister Web site: <http://www.diggles.com/bnb/> Email Mike: [mike@diggles.com](mailto:mike@diggles.com)

TOPOI map printed on 08/04/01 from "California.tpo"



41°28'00" N  
41°27'00" N  
41°26'00" N  
41°25'00" N  
41°24'00" N  
41°23'00" N  
41°22'00" N

120°16'00" W 120°15'00" W 120°14'00" W 120°13'00" W 120°12'00" W NAD27 120°11'00" W

41°28'00" N  
41°27'00" N  
41°26'00" N  
41°25'00" N  
41°24'00" N  
41°23'00" N  
41°22'00" N

TH  
1/8"

120°16'00" W 120°15'00" W 120°14'00" W 120°13'00" W 120°12'00" W NAD27 120°11'00" W

0 100 FEET 0 100 METERS  
Printed from TOPOI ©2000 Wildflower Productions (www.topo.com)

